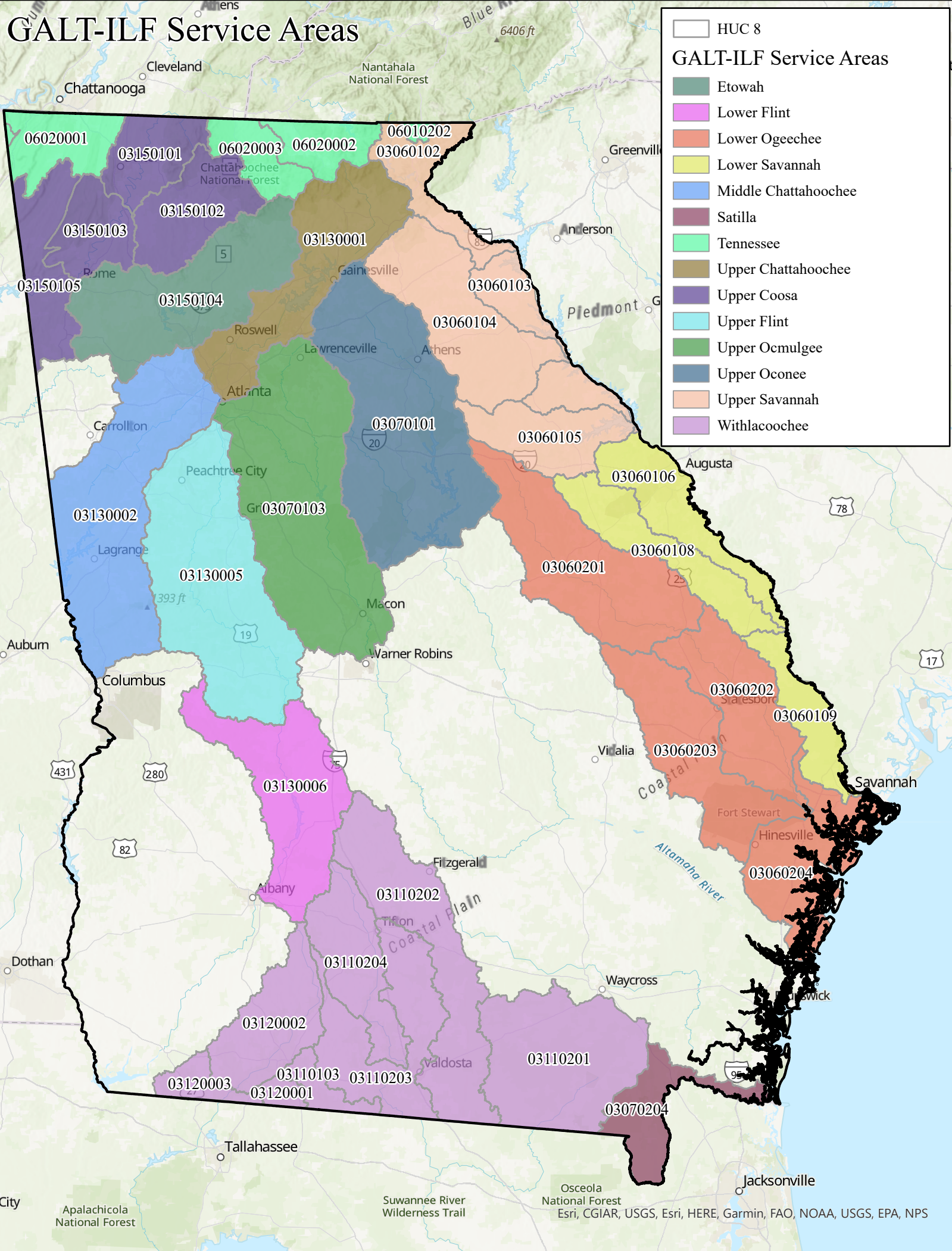


GALT-ILF Service Areas



GALT-ILF Service Areas

- Etowah
- Lower Flint
- Lower Ogeechee
- Lower Savannah
- Middle Chattahoochee
- Satilla
- Tennessee
- Upper Chattahoochee
- Upper Coosa
- Upper Flint
- Upper Ocmulgee
- Upper Oconee
- Upper Savannah
- Withlacoochee

Service Area	Wetland	Stream
Etowah (Wetland)	\$ 108,000 (Legacy)	N/A
Lower Flint (Stream)	N/A	\$ 1,800 (2018) \$ 150 (Legacy)
Lower Ogeechee	\$ 600,000 (2018)	\$ 1,800 (2018)
Lower Savannah	\$ 700,000 (2018)	\$ 1,800 (2018)
Middle Chattahoochee	N/A	\$ 2,200 (2018)
Satilla (Stream)	N/A	N/A
Tennessee	\$ 900,000 (2018) \$ 112,500 (Legacy)	\$ 2,200 (2018) \$ 185 (Legacy)
Upper Chattahoochee	\$ 100,000 (Legacy)	\$ 2,000 (2018)
Upper Coosa	\$ 900,000 (2018) \$ 112,500 (Legacy)	N/A
Upper Flint	N/A	\$2,200 (2018)
Upper Ocmulgee (Wetland)	\$ 800,000 (2018) \$ 100,000 (Legacy)	N/A
Upper Oconee	\$ 800,000 (2018)	\$ 1,800 (2018)
Upper Savannah	\$ 850,000 (2018) \$ 106,250 (Legacy)	\$ 1,800 (2018)
Withlacoochee (Stream)	N/A	\$ 1,800 (2018)

*Listed cost includes 5% temporal loss fee and 5% admin fee. Costs subject to change.

AVAILABLE CREDITS / CONTACT INFORMATION

For additional information on credit availability or to purchase credits please contact Michael Heneghan or Cole Huizinga at the following address:

Georgia-Alabama Land Trust, Inc.
226 Old Ladiga Road
Piedmont, AL 36272

Mike Heneghan, ILF Director
(706)938-4004
mheneghan@galandtrust.org

Cole Huizinga, ILF Specialist
(903)249-5675
chuizinga@galandtrust.org